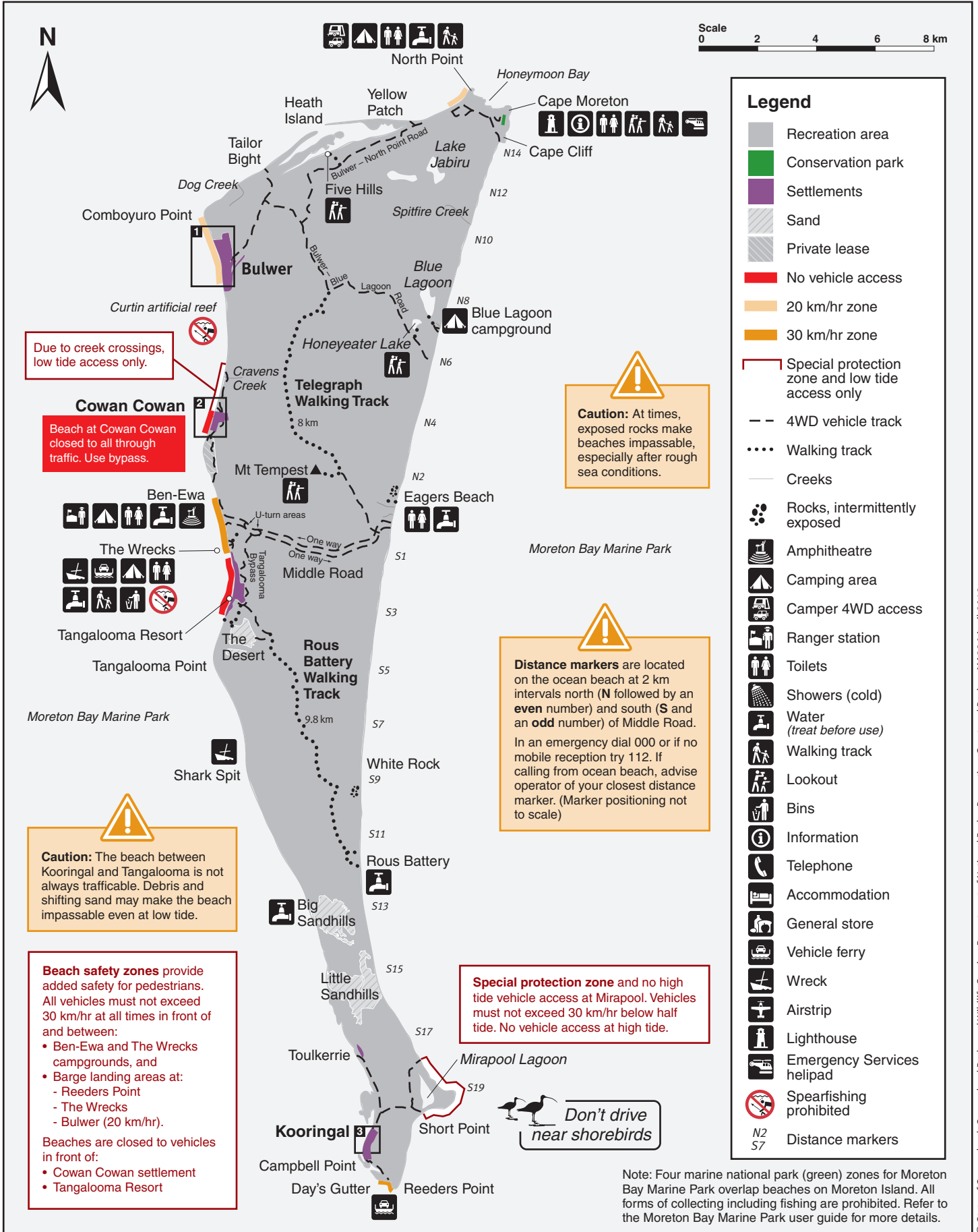


Moreton Island National Park and Recreation Area



For a more detailed map of the roads, walking tracks and highlights to see, purchase the Sunmap Tourist Map for Moreton Island. Available from barge operators, selected outdoor stores and the Department of National Parks, Recreation, Sport and Racing at www.nprs.qld.gov.au or (07) 3896 3216. Topographic maps (1:25,000) for the island are Moreton 9543-11, Mount Tempest 9543-12 and Koorungal 9543-21.

Locality map and inset maps 1, 2 and 3

Legend

- Recreation area
- Campground
- Water
- No vehicle access
- 20 km/hr zone
- Special protection zone and low tide access only
- 4WD vehicle track
- Walking track
- Toilets
- Showers (cold)
- Water (treat before use)
- General store
- Bins
- Petrol
- Amphitheatre
- Telephone
- Wreck
- Vehicle ferry
- Airstrip
- Emergency Services helipad

